



Now includes
Induro® Reverse Transcriptase

Reverse Transcriptase Portfolio

PRODUCTS, KITS, AND MIXES FOR
OPTIMAL REVERSE TRANSCRIPTION



NEW ENGLAND

BioLabs®

be INSPIRED
drive DISCOVERY
stay GENUINE

Reverse Transcriptases for improved cDNA Synthesis

The synthesis of DNA from an RNA template, via reverse transcription, produces complementary DNA (cDNA). Reverse transcriptases (RTs) use an RNA template and a short primer complementary to the 3' end of the RNA to direct the synthesis of the first strand cDNA, which can be used directly as a template for applications such as PCR, qPCR, LAMP, or sequencing workflows.

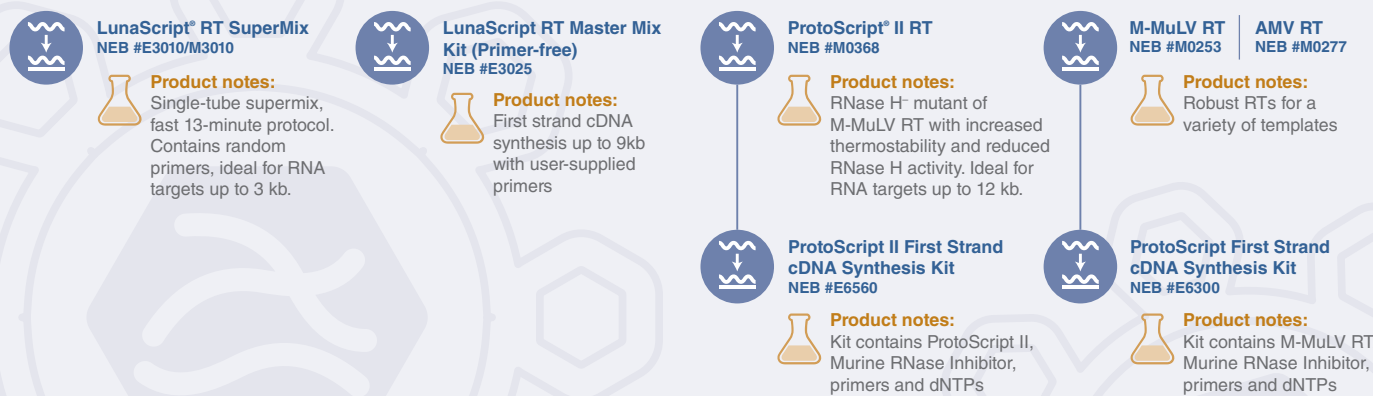
View the full product portfolio at
www.neb.com/RT



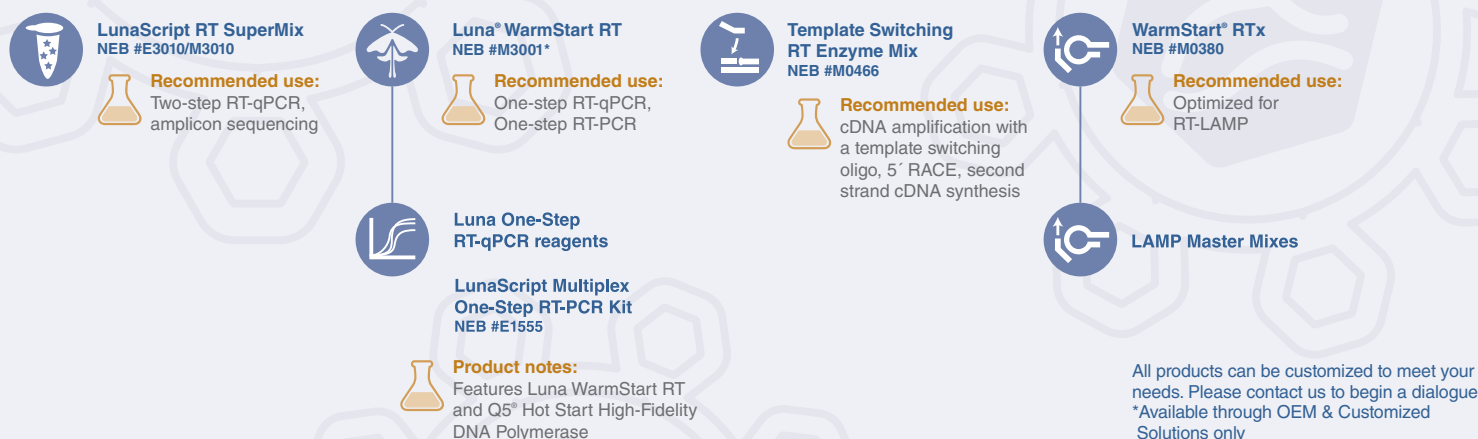
NEB offers a selection of retroviral and intron-encoded RTs that are available standalone or in kits or mixes. Products have been optimized for increased thermostability, minimized RNase H activity, increased processivity, increased inhibitor tolerance, speed and flexibility. For guidance on what products we offer and their recommended use, please refer to the infographic below.

RETROVIRAL RTs

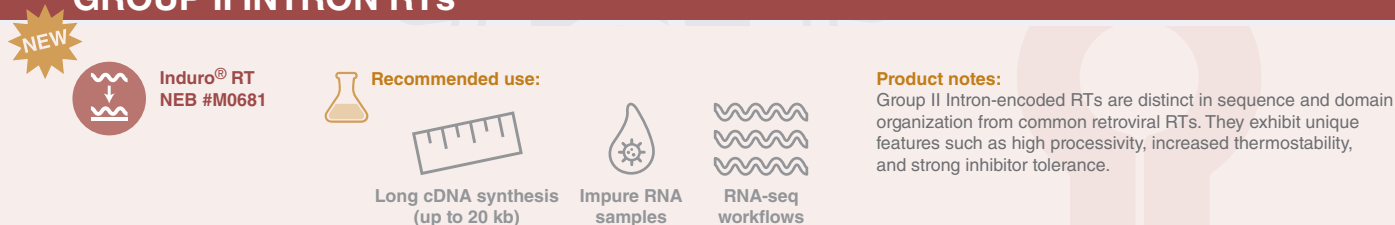
For general cDNA synthesis



For specialized cDNA synthesis



GROUP II INTRON RTs



LunaScript RT SuperMixes and Primer-free Master Mix

LunaScript RT is a novel, *in silico*-designed RT engineered for improved performance and optimized for first strand cDNA synthesis. LunaScript RT delivers unsurpassed benefits with a short reaction time (< 15 min) and tolerates elevated temperatures (55°–65°C) for working with templates with complex secondary structures.

LunaScript RT is available in three different formats (see right):

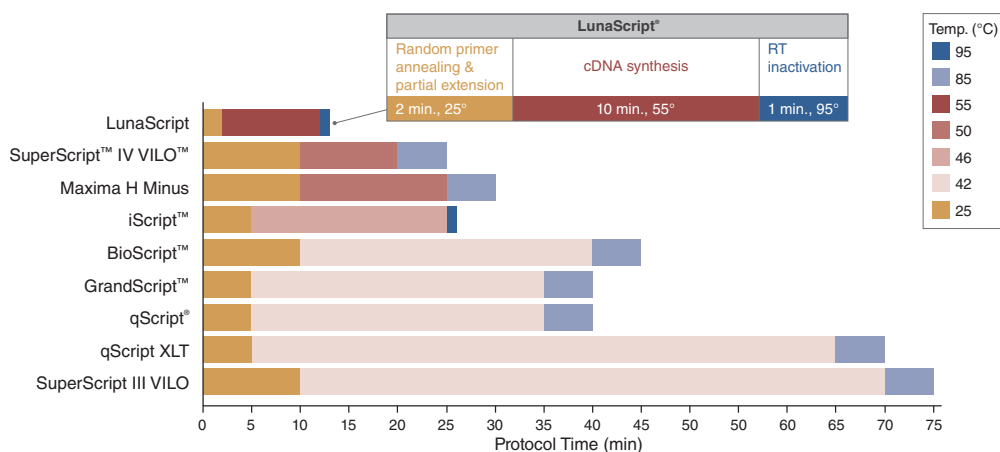
The SuperMix with or without No-RT Control Mix, and a Primer-free Master Mix. Both SuperMixes (NEB #M3010 and NEB #E3010) are optimized for qPCR workflows or for RNA targets in amplicon sequencing and produce cDNA up to 3 kb in length. They include random hexamers, oligo-dT primers, dNTPs, and Murine RNase Inhibitor. The LunaScript Super Mix Kit (NEB #E3010) also contains a No RT-Control Mix and Nuclease-free water. For more flexibility, LunaScript RT is also available as LunaScript RT Master Mix Kit (Primer-free) (NEB #E3025) and ideal for first strand cDNA synthesis (e.g. in context of molecular cloning), two-step RT-qPCR, and RNA-seq workflows with cDNA synthesis up to 9 kb in length (see figure on page 4). All three LunaScript RT Mixes contain a non-interfering, visible blue tracking dye helping to eliminate pipetting errors.

The cDNA products generated by LunaScript have been extensively evaluated in qPCR using the Luna qPCR Master Mixes (NEB #M3003/M3004). LunaScript RT SuperMix has been featured in the SARS-CoV-2 sequencing workflow from the ARTIC Network and is a component in the NEBNext® ARTIC SARS-CoV-2 Library Prep Kits.

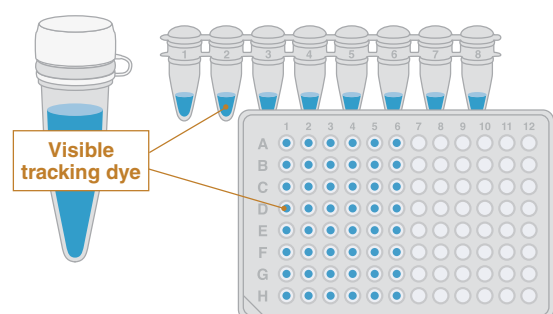
LunaScript RT is available in three different formats:

	LunaScript® RT SuperMix Kit (NEB #E3010)	LunaScript RT SuperMix (NEB #M3010)	LunaScript® RT Master Mix Kit (Primer-free) (NEB #E3025)
	LunaScript RT SuperMix No-RT Control Mix	LunaScript RT SuperMix	LunaScript RT MasterMix (Primer-free) No-RT Control Mix (Primer-free)
RT SuperMix included	✓	✓	n/a
MasterMix (Primer free)	n/a	n/a	✓
No-RT Control Mix included	✓	✗	✓
Nuclease-free water included	✓	✗	✓

At just 13 minutes, LunaScript RT SuperMix offers the shortest available first-strand cDNA synthesis protocol



Luna products feature a blue tracking dye



LunaScript forms a dark blue pellet at the bottom of the reaction vessel, easily discernible in clear or blue color mixes.

Learn more about the LunaScript RT SuperMix and request a sample at www.neb.com/E3010



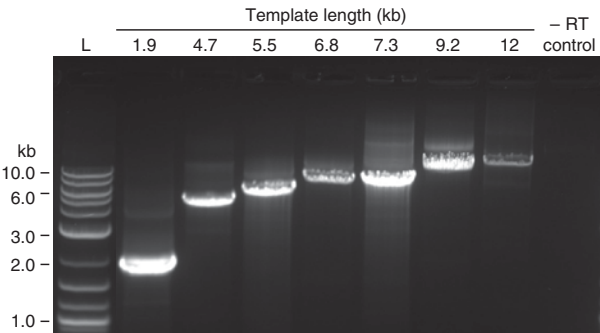
ProtoScript II Reverse Transcriptase

ProtoScript II Reverse Transcriptase is a recombinant M-MuLV reverse transcriptase with reduced RNase H activity and increased thermostability. It can be used to synthesize first strand cDNA at higher temperatures than the wild type M-MuLV. The enzyme is active up to 48°C, providing higher specificity, higher yield of cDNA and more full-length cDNA product up to 12 kb. ProtoScript II RT is included in our Protoscript II First Strand cDNA Synthesis Kit (NEB #E6650).

Learn more about
 ProtoScript II Reverse
 Transcriptase at
www.neb.com/M0368

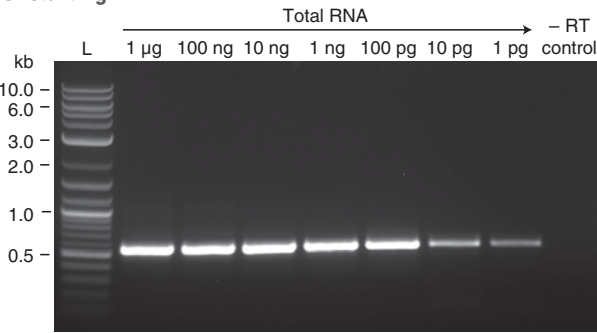


Robust cDNA synthesis is achieved even with longer templates



Jurkat total RNA (1 µg) was used in a 20 µl first strand cDNA synthesis with 200 units of NEB ProtoScript II Reverse Transcriptase. Reactions were incubated at 42°C for 50 minutes, followed by heat inactivation for 5 minutes at 80°C. 1 µl of cDNA was used in a 25 µl PCR using LongAmp® Taq Master Mix (NEB #M0533) for 35–40 cycles. Sizes are indicated above gel.

Generate high quality cDNA even with very low amounts of starting DNA



Decreasing amounts of Jurkat total RNA (1 µg – 1 pg) were used in 20 µl first strand cDNA synthesis with 200 units of NEB ProtoScript II Reverse Transcriptase. Reactions were incubated at 42°C for 50 minutes, followed by heat inactivation for 5 minutes at 80°C. 1 µl of cDNA was used in a 25 µl PCR using LongAmp Taq Master Mix (NEB #M0553) for 40 cycles. The target is a 0.6 kb fragment of GAPDH. Ladder L is the 2-Log DNA Ladder (NEB #N0469).

How do LunaScript and ProtoScript kits compare?

	LunaScript RT SuperMix (NEB #E3010/M3010)	LunaScript RT Master Mix (Primer-free) Kit (NEB #E3025)	ProtoScript II First Strand cDNA Synthesis Kit (NEB #E6560)
Kit Components	1. LunaScript RT SuperMix (5X) 2. No-RT Control Mix (5X)* 3. Nuclease-free Water* *Offered with E3010 kit	1. LunaScript RT Master Mix (Primer-free)(5X) 2. No-RT Control Mix (Primer-free)(5X) 3. Nuclease-free Water	1. ProtoScript II Enzyme Mix (10X) 2. ProtoScript II Reaction Mix (2X) 3. Oligo d(T) ₂₃ VN (50 µM) 4. Random Primer Mix (60 µM) 5. Nuclease-free Water
RT	Luna Reverse Transcriptase	Luna Reverse Transcriptase	ProtoScript II Reverse Transcriptase
Component Details with User Additions		<p>* Primer can be dT, random or gene-specific</p>	<p>* Primer can be dT, random or gene-specific</p>
Protocol	25°C 2 min; 55°C 10 min; 95°C 1 min	(25°C 2 min;) 55°C 10 min; 95°C 1 min	(i25°C 5 min;) 42°C 60 min; 80°C 5 min
Features & Benefits	<ul style="list-style-type: none"> • SuperMix • Short Protocol • Tracking dye • Higher reaction temperature 	<ul style="list-style-type: none"> • Flexible choice of primers • Short Protocol • Tracking dye • Higher reaction temperature 	<ul style="list-style-type: none"> • Flexible choice of primers • Kit format includes all components

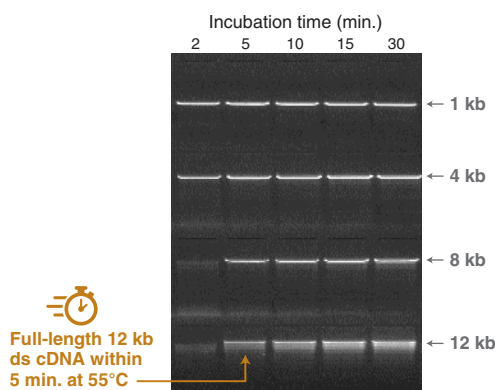
Induro Reverse Transcriptase

Induro Reverse Transcriptase is a group II intron-encoded RT that exhibits high processivity, increased thermostability, and increased tolerance of inhibitors in the synthesis of cDNA from RNA. It is an ideal enzyme for challenging cDNA synthesis from long transcripts, RNAs with strong secondary structures, and RNA samples with inhibitors. With improved 5' sequencing coverage of long transcripts, Induro Reverse Transcriptase can enable RNA-seq applications such as direct RNA and long read cDNA sequencing workflows.

Learn more about Induro Reverse Transcriptase at www.neb.com/M0681



Induro Reverse Transcriptase exhibits high processivity, permitting rapid cDNA synthesis

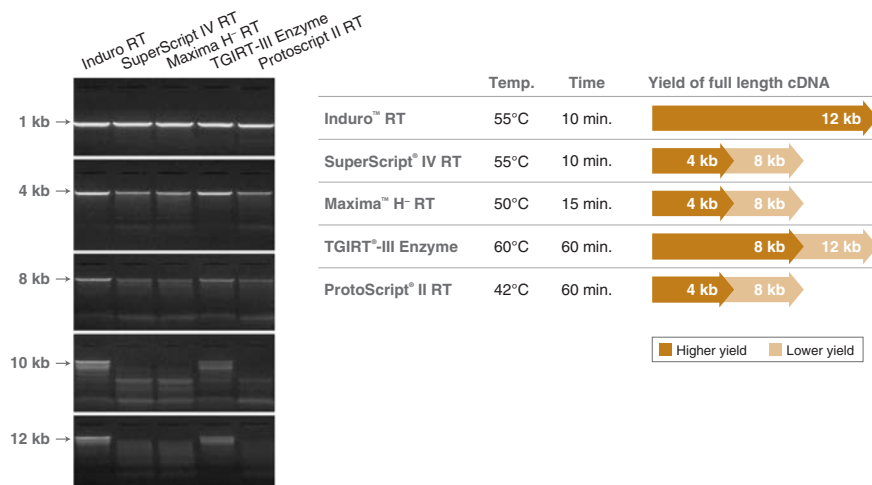


Induro Reverse Transcriptase can synthesize a full-length 12 kb cDNA product within 5 min. at 55°C. *In vitro* transcribed poly(A) RNA templates (1 kb, 4 kb, 8 kb or 12 kb) were used to investigate full-length cDNA synthesis. After first-strand cDNA synthesis, RNA was hydrolyzed immediately by NaOH. Subsequently, an aliquot of the cDNA products was used to make full-length ds cDNA in the presence of a 5' specific primer. Equal volume of ds cDNA was analyzed on an agarose gel.

Benefits

- Rapidly generate high yields of long cDNA
- Strong inhibitor tolerance
- Support for direct RNA sequencing and long read cDNA sequencing workflows
- Generate cDNA at higher temperatures
- Experience comparable fidelity to retroviral RTs

Induro Reverse Transcriptase generates highest yields of long cDNA



Induro Reverse Transcriptase generates the highest product yields for cDNA ≥ 8 kb. RNA templates were *in vitro* transcribed poly(A) RNA (1 kb, 4 kb, 8 kb, 10 kb or 12 kb). After first strand cDNA synthesis, RNA was degraded and the second strand cDNA synthesis was performed in the presence of a 5' specific primer.

Applications

- Challenging cDNA synthesis
 - long cDNA synthesis (>8 kb)
 - RNA with isoforms or secondary structures
 - samples with impurities/inhibitors
- RNA-seq workflows, including direct RNA sequencing on the ONT platform, direct long read cDNA sequencing on the ONT platform, and RNA-seq studies of modifications and structures
- Applications where intron RTs are used (e.g., 3' template switching)

VIEW OUR NEBTV WEBINAR



Induro Reverse Transcriptase: A Robust, Thermostable, Intron-Encoded RT for Full-Length cDNA Synthesis

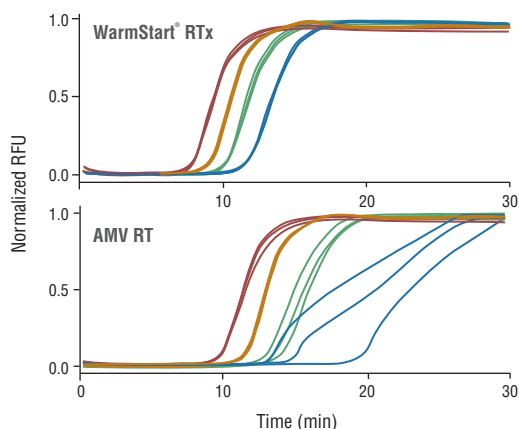
WarmStart RTx Reverse Transcriptase

WarmStart RTx Reverse Transcriptase (NEB #M0380) is a unique *in silico*-designed, RNA-directed DNA polymerase coupled with a reversibly-bound aptamer that inhibits RTx activity below 40°C. This enzyme can synthesize a complementary DNA strand initiating from a primer using RNA (cDNA synthesis) or single-stranded DNA as a template. RTx is a robust enzyme for RNA detection in amplification reactions and is particularly well-suited for use in LAMP. The WarmStart property enables high throughput applications, room temperature setup, and increases the consistency and specificity of amplification reactions. RTx contains intact RNase H activity.

Learn more about
WarmStart RTx Reverse
Transcriptase at
www.neb.com/M0380

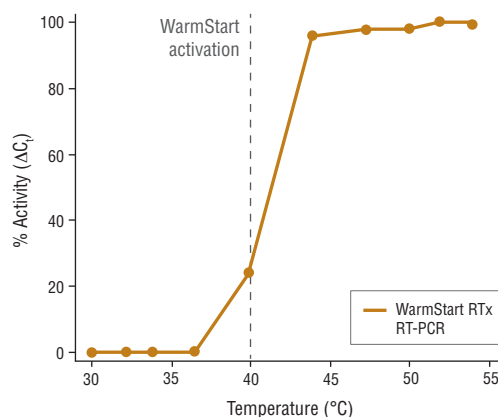


WarmStart improves speed and sensitivity in RT-LAMP



RT-LAMP reactions with Bst 2.0 WarmStart DNA Polymerase and the indicated reverse transcriptase were incubated at 65°C with 1 pg – 100 ng of Jurkat total RNA. Reactions were monitored with real-time fluorescence, and resulting curves are shown. WarmStart RTx provides faster reaction threshold times for improved consistency and sensitivity with lower input RNA amounts. RT-LAMP reactions performed with AMV Reverse Transcriptase resulted in inconsistent detection, as indicated by wide variation at lower RNA input concentrations (blue curves).

WarmStart control of WarmStart RTx



cDNA synthesis was performed for 10 minutes, followed by qPCR analysis. Resulting Ct values were normalized to a "no RT" control for 0% activity and fastest Ct for 100% activity. WarmStart RTx is inhibited by a reversibly bound aptamer at temperatures below 40°C, and is fully active at temperatures 42°C and higher.

What products are recommended for molecular diagnostics?

NEB offers a selection of RTs, DNA polymerases, and master mixes developed for rapid and sensitive molecular diagnostics. To support the needs of this market, products are available in fully lyophilized, high concentration, or glycerol-free/lyo-compatible formats. All formats are available for customization.

WarmStart RTx is ideal for LAMP and isothermal amplification workflows. Luna RT supports RT-qPCR workflows and is available in a lyophilized format (NEB #L4001). These enzymes have been adopted in numerous diagnostic assays, including for COVID-19.

The acquisition of Fluorogenics™ Limited, now NEB Lyophilization Sciences™, combines lyophilization expertise with our diverse product portfolio to offer formats and services designed for diagnostic assay and instrument developers. **Please email custom@neb.com to discuss your needs and visit www.neb.com/lyoprime and www.neb.com/mdx to learn more.**



Products can be lyophilized in different form factors.

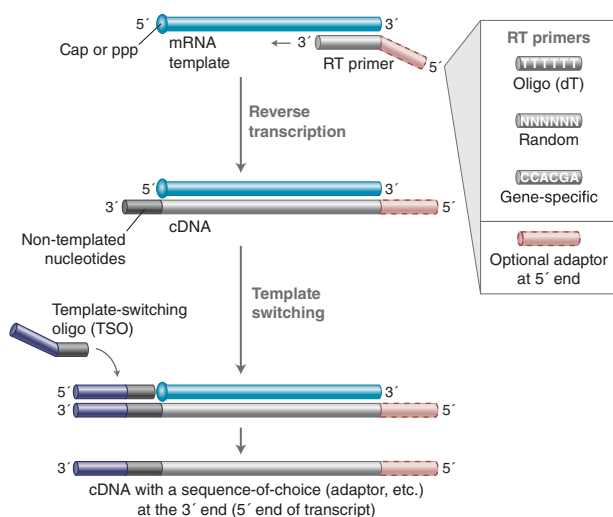
Template Switching RT Enzyme Mix

The Template Switching RT Enzyme Mix and accompanying reaction buffer enable efficient template switching activity in a reverse transcription reaction. The mix contains a unique RT and Murine RNase Inhibitor. Unlike competitor RT products, no additives (such as PEG or betaine) are required for optimal performance, simplifying reaction setup. In conjunction with a template switching oligo (TSO), cDNA is synthesized with a known sequence of choice attached to the 3' end.

Learn more about
Template Switching
RT Enzyme Mix at
www.neb.com/M0466



Template switching overview



Upon reaching the 5' end of the RNA template, the reverse transcriptase adds a few non-templated nucleotides to the 3' end of the cDNA. These non-templated nucleotides can anneal to a TSO with a known sequence handle of choice, prompting the reverse transcriptase to switch from the RNA template to the TSO. The resulting cDNA contains a universal sequence (complementary to the TSO sequence) at the 3' end.

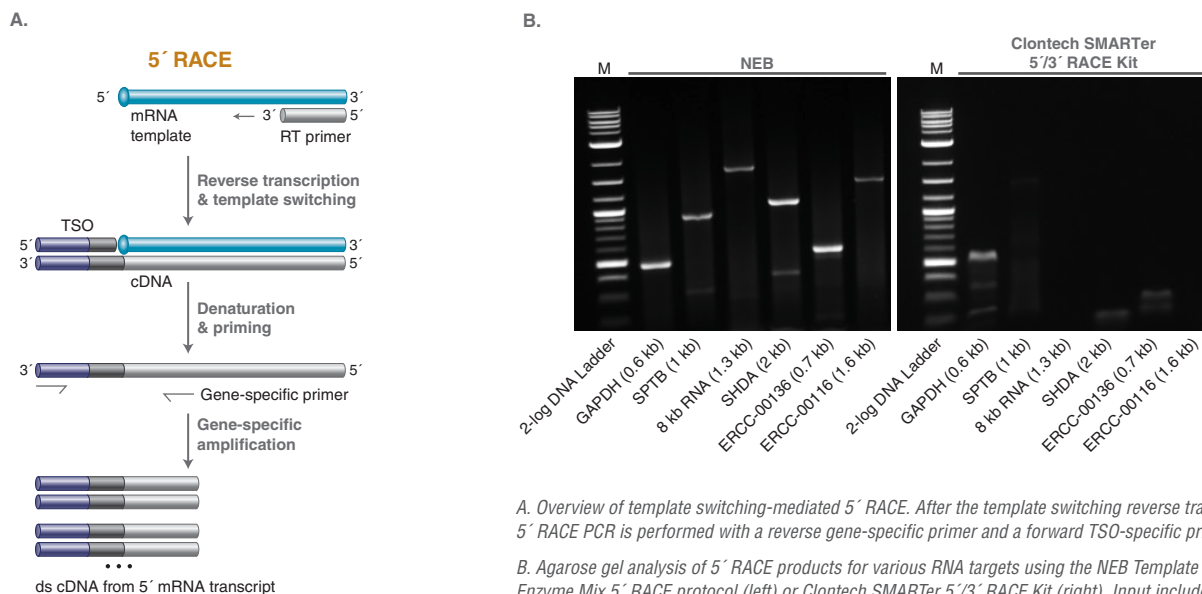
Advantages

- Prepare RNA-seq libraries from extremely low input: single cells/nuclei or 2 pg total RNA
- Low background for RNA-seq or 5' RACE
- Use with various TSOs, RT primers and DNA polymerases for full-length cDNA amplification
- Enjoy faster protocols as compared to alternative RNA-seq methods (i.e., Smart-Seq[®])

Applications

- cDNA amplification
- 5' RACE
- 2nd strand cDNA synthesis (full coverage of the 5' end of the transcript)

Template switching RT Enzyme Mix offers a simple workflow and superior performance for 5' RACE



A. Overview of template switching-mediated 5' RACE. After the template switching reverse transcription reaction, 5' RACE PCR is performed with a reverse gene-specific primer and a forward TSO-specific primer.

B. Agarose gel analysis of 5' RACE products for various RNA targets using the NEB Template Switching RT Enzyme Mix 5' RACE protocol (left) or Clontech SMARTer 5'/3' RACE Kit (right). Input included 1 µg of Jurkat total RNA, 10 pg of 8 kb synthetic RNA and 10 ng of ERCC RNA Mix 1 to evaluate the performance as a function of transcript length and copy number. For the NEB reaction, oligo (dT)₄₀ VN was used as an RT primer and GCTAATCATTGCAAGCAGTGGTATCAACGACAGTACATrGrG as the TSO-specific PCR primer underlined. The same internal gene-specific PCR primer was used for both methods. Target names and expected sizes are as indicated.

Product	NEB #	Size
LunaScript RT SuperMix Kit	E3010S/L	25/100 rxns
LunaScript RT SuperMix	M3010L/X/E	100/500/2,500 rxns
LunaScript RT Master Mix Kit (Primer-free)	E3025S/L	25/100 rxns
LunaScript Multiplex One-Step RT-PCR Kit	E1555S/L	50/250 rxns
Induro Reverse Transcriptase	M0681S/L	4,000/10,000 units
ProtoScript II Reverse Transcriptase	M0368S/L/X	4,000/10,000/40,000 rxns
ProtoScript II First Strand cDNA Synthesis Kit	E6560S/L	30/150 rxns
ProtoScript First Strand cDNA Synthesis Kit	E6300S/L	30/150 rxns
M-MuLV Reverse Transcriptase	M0253S/L	10,000/50,000 units
AMV Reverse Transcriptase	M0277S/L	200/1,000 units
WarmStart® RTx Reverse Transcriptase	M0380S/L	50/250 rxns

Companion Products

Oligo d(T) ₂₃ VN	S1327S	1 A ₂₆₀ units
Random Primer Mix	S1330S	100 µl
Deoxynucleotide (dNTP) Solution Mix	N0447S/L	8/40 µmol

FEATURED ONLINE TOOLS



PCR Selector

For help with choosing the best polymerase for your PCR, try our PCR selector at [PCRselector.neb.com](https://www.neb.com/PCRselector).



Tm Calculator

For help with calculating annealing temperatures, try our Tm Calculator at [TmCalculator.neb.com](https://www.neb.com/TmCalculator).

Products and content are covered by one or more patents, trademarks and/or copyrights owned or controlled by New England Biolabs, Inc. (NEB). The use of trademark symbols does not necessarily indicate that the name is trademarked in the country where it is being read; it indicates where the content was originally developed. See www.neb.com/trademarks. The use of these products may require you to obtain additional third-party intellectual property rights for certain applications. For more information, please email busdev@neb.com.

Your purchase, acceptance, and/or payment of and for NEB's products is pursuant to NEB's Terms of Sale at www.neb.com/support/terms-of-sale. NEB does not agree to and is not bound by any other terms or conditions, unless those terms and conditions have been expressly agreed to in writing by a duly authorized officer of NEB.

B CORPORATION® is a registered trademark of B Lab IP, LLC, Inc.
 LABCHIP® is a registered trademark of Caliper Life Sciences, Inc., part of PerkinElmer, Inc.
 SUPERSCRIP™, VILO™ MAXIMA™ and are trademarks of Thermo Fisher Scientific
 iSCRIPT™ is a trademark of Bio-Rad Laboratories, Inc.
 GRANDSCRIPT™ is a trademark of Cambio
 qSCRIPT™ is a trademark of Quantabio
 TGIRT® is a registered trademark of InGex
 SMART-SEQ® is a registered trademark of Clontech Laboratories.

© Copyright 2023, New England Biolabs, Inc.; all rights reserved

Common Swift (*Apus apus*)

Aerial mastery of the highest order, common swifts have adapted superbly to their environment. Except when nesting, swifts spend their lives in the air, living on the insects caught in flight; they drink, feed, and sleep on the wing. Some go 10 months without landing. Over a lifetime they can cover millions of miles.

GERMANY & AUSTRIA
 New England Biolabs GmbH
 Brünningstr. 50, Geb B852
 65926 Frankfurt/Main, Germany
 Tel: +49/(0)69/305-23140
 Fax: +49/(0)69/305-23149

Free Call: 0800/246 5227 (Germany)
 Free Call: 00800/246 52277 (Austria)
info.de@neb.com

www.neb-online.de

HEADQUARTERS:

USA

New England Biolabs, Inc.
 Telephone: (978) 927-5054

Toll Free (USA Orders): 1-800-632-5227

Toll Free (USA Tech): 1-800-632-7799

Fax: (978) 921-1350

info@neb.com

www.neb.com

www.neb.com



Your local NEB distributor:

BeNeLux:
 BIOKÉ
info@bioke.com
www.bioke.com

BULGARIA
 ELTA 90M Ltd.
office@elta90.eu
www.elta90.com

CROATIA:
 Diagnostica Skalpeli d.o.o.
skalpel@skalpeli.hr
www.skalpeli.hr

CZECH REPUBLIC:
 BioTech a.s.
info@ibiotech.cz
www.ibiotech.cz

DENMARK:
 BioNordika Denmark A/S
info@bionordika.dk
www.bionordika.dk

FINLAND:
 BioNordika Oy
info@bionordika.fi
www.bionordika.fi

GEORGIA
 Oxgen-Import, LLC
info@oxgenimport.ge
www.oxgenimport.ge

GREECE:
 BIOLINE SCIENTIFIC
info@bioline.gr
www.bioline.gr

HUNGARY:
 Kvalitex Kft.
info@kvalitex.hu
www.kvalitex.hu

ITALY:
 EUROCLONE S.P.A.
info@euroclone.it
www.euroclonegroup.it

ISRAEL:
 Ornat BioChemicals &
 Lab Equipment
ornatbio@ornat.co.il
www.ornat.co.il

KAZAKHSTAN
 INOS, LLC
market@inos.kz
www.inos.kz

LITHUANIA:
 Nanodiagnostika, Ltd.
info@nanodiagnostika.lt
www.nanodiagnostika.lt

NORWAY:
 BioNordika AS
info@bionordika.no
www.bionordika.no

POLAND:
 Lab-JOT Ltd. Sp.z o.o. Sp.k.
biuro@labjot.com
www.labjot.com

PORTUGAL:
 Werfen
dac-pt@werfen.com
pt.werfen.com

ROMANIA:
 BioZyme
contact@biozyme.ro
www.biozyme.ro

SERBIA:
 Alfa Genetics d.o.o.
office@alfagenetics.rs
www.alfagenetics.rs

SPAIN:
 Werfen
customerservice-es@werfen.com
es.werfen.com

SLOVAK REPUBLIC
 BioTech s.r.o.
info@ibiotech.sk
www.ibiotech.sk

SLOVENIA:
 Mikro+Polo d.o.o.
info@mikro-polo.si
www.mikro-polo.si

SOUTH AFRICA:
 Inqaba Biotechnical Industries (Pty) Ltd
info@inqababiotec.co.za
www.inqababiotec.co.za

SWEDEN, ESTONIA, LATVIA, LITHUANIA:
 BIONORDIKA SWEDEN AB
info@bionordika.se
www.bionordika.se

SWITZERLAND:
 BioConcept Ltd.
info@bioconcept.ch
www.bioconcept.ch

TURKEY:
 EKA BIOLAB TEKNOLOJİ
info@ekabiolab.com
www.ekabiolab.com

Distributors

For a complete list of NEB subsidiaries and distributors, please go to:

www.neb.com/international-support